



# STANDARD RANGE

## SELECTION GUIDE

### 100% COTTON BUFFING MOPS

All standard cotton buffing mops are **made to measure** in our workshops in France. **Economical, efficient** and **durable**, they are perfectly adapted to **traditional polishing in industries**.



# STANDARD RANGE

## SELECTION GUIDE

### SOLID, LIQUID OR CREAM COMPOUNDS

Standard polishing compounds are suitable for **traditional polishing** on all surfaces where **productivity** and **cost reductions** are major issues.

## CHOOSE YOUR CLOTH

Step	Recommended for	Ref.	Description
Pre-polish	Operations requiring power and stiffness and used with a sisal cotton buffing mop	→ <b>CRJ</b>	Very stiff, thick and rough yellow cloth
	Traditional industrial operations	→ <b>CRE</b>	Versatile, resistant and economical unbleached cloth
	All types of surface preparation	→ <b>MB</b>	Highly versatile, efficient, economical thick and resistant unbleached cloth
	All operations	→ <b>LM1</b>	Highly versatile and extremely wear-resistant, treated unbleached cloth
Polishing	Traditional industrial operations	→ <b>M3</b>	Versatile, wear-resistant unbleached cloth
	Traditional industrial operations	→ <b>KH</b>	Flexible and versatile white cloth
	Traditional industrial operations	→ <b>SH</b>	Stiff, dense and resistant white cloth
	Traditional as well as highly demanding operations	→ <b>PST</b>	Versatile, resistant and highly efficient thin unbleached cloth
Finishing	Traditional finishing operations	→ <b>MOE</b>	Flexible and soft white flannel, brushed on both sides
	Traditional finishing and wiping operations	→ <b>MO</b>	Thick, extra soft unbleached flannel, good resistance, brushed on both sides
	Traditional operations	→ <b>LAG</b>	Light and thin white cloth

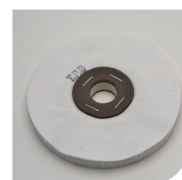
## CHOOSE YOUR ASSEMBLY



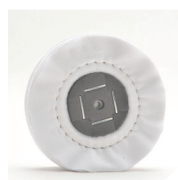
STITCHED



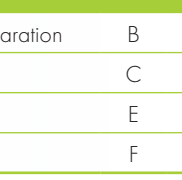
STAPLED



CARDBOARD CENTER



STITCHED CARDBOARD CENTER



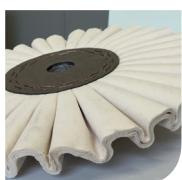
SEE MORE!  
SISAL AND  
SISAL/COTTON  
DISCS



SQUARE OR RECTANGLE



RIBBED



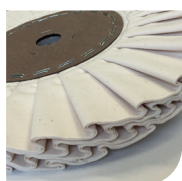
CIGAR FOLD



BULK



HALF FOLDED SHEET



PLEATED



## CHOOSE YOUR SOLID, LIQUID OR CREAM COMPOUND

Application	Polished surfaces	Features	Cut	Gloss	Ref.
<b>STANDARD RANGE</b>					
Solid compounds suitable for all polishing processes requiring gloss, cost reduction and higher productivity, for small or large volumes, in automatic or manual processes.	All surfaces	Strong preparation	B	G	→ <b>FERINOX TR</b>
		Strong preparation	C	F	→ <b>CUPRAL TC1</b>
	All metals	Strong preparation	C	E	→ <b>FERINOX BLANCHE</b>
		Medium preparation	C	E	→ <b>CUPRAL CSP2</b>
		Medium preparation	C	G	→ <b>FERINOX FB66</b>
	Cuprous metals	Polishing	C	E	→ <b>CUPRAL SP3</b>
	Steels, stainless steel	Polishing	C	E	→ <b>GRISINOX</b>
	All metals, plastics	Polishing	D	C	→ <b>CHROMA LM</b>
	Steels, cuprous metals	Polishing	D	C	→ <b>CHROMA D</b>
	Steels, stainless steel, brass, titanium	Polishing	D	C	→ <b>S22</b>
	Plastics, acetate	Polishing	D	D	→ <b>PLASTEC ROSE</b>
	Cuprous metals, zamak, brass	Finishing	E	C	→ <b>SG71S</b>
	Aluminum, zamak	Finishing	F	C	→ <b>NINOXAL BLEUE</b>
	Silver, cuprous metals, stainless steel, aluminum	Finishing	E	C	→ <b>SG275S</b>
	Stainless steel, precious metals, cuprous metals, titanium, platinum, aluminum	Finishing	F	C	→ <b>MICROR 01</b>
	Stainless steel, steels, aluminum, tin	Finishing	F	C	→ <b>INOX BLANC</b>
	Lacquers, wood, bakelite, resins, varnishes	Super-finishing	F	C	→ <b>PLASTEC BEIGE</b>
	Precious metals, cuprous metals	Super-finishing	F	B	→ <b>JAUNE B</b>

### PRIMOLINE

Solid compounds suitable for traditional polishing on the most common materials and offering excellent value for money.

Brass, stainless steel, zamak	Strong preparation	B	G	→ <b>PRIMO 50</b>
	Preparation	C	F	→ <b>PRIMO 100</b>
	Polishing	E	C	→ <b>PRIMO 150</b>
	Finishing	F	C	→ <b>PRIMO 200</b>

### MEDILINE

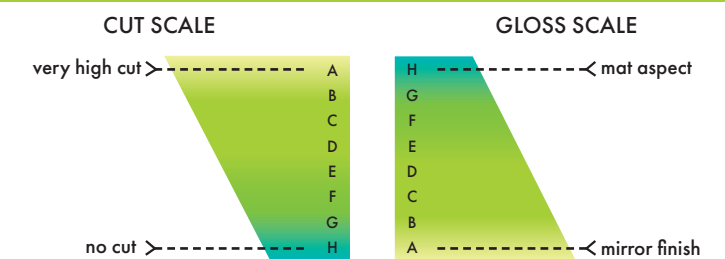
Solid compounds with no animal fat, efficient and economical, reducing washing times.

Ferrous metals	Strong preparation	B	G	→ <b>MEDILUX 50</b>
Titanium, steels, stainless steel, cobalt-chromium, ferrous metals	Strong preparation	C	F	→ <b>MEDILUX 100</b>
	Medium preparation	C	D	→ <b>MEDILUX 150</b>
Ferrous metals, titanium, chrome-cobalt, silver	Fine polishing	F	C	→ <b>MEDILUX 200</b>
Chrome-cobalt, titanium	Finishing	F	C	→ <b>MEDINOX</b>



SEE ALSO!  
B-PLUG SYSTEM  
FOR BULA  
MACHINES

To help you choose the right compound, refer to the MERARD cut and gloss scales.



MADE IN FRANCE





# EXPERT RANGE SELECTION GUIDE 100% COTTON BUFFING MOPS

All the cotton buffing mops of the Expert range are **made to measure** in our workshops in France. **Resistant** and **very effective**, they are suitable for **the most demanding polishing on all surfaces**.



# EXPERT RANGE SELECTION GUIDE SOLID, LIQUID OR CREAM COMPOUNDS

Expert polishing compounds are specially appreciated for **all highly demanding configurations**: mirror finish, high hardness metals, almost zero roughness, etc.

## CHOOSE YOUR CLOTH

Step	Recommended for	Ref.	Description
Pre-polish	Operations requiring power and stiffness and used with a sisal cotton buffing mop	→ <b>CRJ</b>	Very stiff, thick and rough yellow cloth
	Operations requiring removal of material	→ <b>MAJ</b>	Highly efficient thick and stiff yellow cloth
	Operations requiring a certain degree of conformability	→ <b>C9N</b>	Thick and semi-stiff coated blue cloth
	All operations	→ <b>LM1</b>	Highly versatile and extremely wear-resistant treated unbleached cloth
	Precision operations	→ <b>LA</b>	Versatile, flexible and extremely resistant unbleached cloth
Polishing	Traditional as well as highly demanding operations	→ <b>ALX</b>	Versatile, resistant and highly efficient thin unbleached cloth
	Polishing or preparation of demanding and technical parts	→ <b>TP</b>	Ultra-versatile and extremely wear-resistant unbleached cloth with very fine, dense and stiff weave
	Demanding operations	→ <b>TPA</b>	Flexible, dense and highly resistant very pure white cloth
	Demanding and technical operations	→ <b>TPBC</b>	Very tightly-woven and extremely wear-resistant extra-pure white glazed cloth, slightly stiffer than TPB
	Demanding and technical operations	→ <b>TPB</b>	Very thin and resistant, flexible extra-pure white cloth, long lifetime
Finishing	Demanding and technical finishing operations	→ <b>MOC1</b>	Flexible and thin white flannel, good resistance, brushed on 1 side
	Demanding and technical finishing operations	→ <b>MOC2</b>	Highly flexible, thin and extra soft white flannel, brushed on both sides
	Demanding and technical finishing and wiping operations	→ <b>MOG</b>	Flexible, thin and extra soft unbleached flannel, brushed on both sides
	High-end and demanding finishing operations	→ <b>STV</b>	Super-thin, extremely pure and slightly glazed ivory cloth

## CHOOSE YOUR ASSEMBLY



MADE IN FRANCE



## CHOOSE YOUR SOLID, LIQUID OR CREAM COMPOUND

Application	Polished surfaces	Features	Cut	Gloss	Ref.
EXPERT RANGE					
For highly demanding polishing operations, offering exceptional polishing characteristics and guaranteeing a very high gloss, outstanding precision and profitability.	All metals	Dry preparation	B	G	→ <b>LKAS</b>
		Dryer preparation	B	G	→ <b>LKTC</b>
	Cuprous metals, tin	Polishing	E	C	→ <b>SG69S</b>
	Silver, platinum, stainless steel, brass	Fine polishing	F	B	→ <b>VOC</b>
	Lacquers, wood, bakelite, resins, varnishes	Fine polishing	F	C	→ <b>PLASTEC B1</b>
	Silver, cuprous metals, stainless steel, aluminum	Finishing	G	B	→ <b>JOL</b>
LUXOR®					
High-end polishes suitable for jewelry, watchmaking and other demanding markets. High performance, fast results and mirror finish.	All metals	Universal preparation	B	F	→ <b>Pink</b>
	All metals, cuprous metals, plastics	Polishing	C	C	→ <b>Green</b>
	Non-ferrous metals, aluminum, zamak, brass	Polishing	F	E	→ <b>Blue</b>
	Platinum	Polishing	D	D	→ <b>Gray</b>
	Steels, stainless steel, silver, platinum, lacquers, resins	Fine polishing	F	B	→ <b>White</b>
	Precious metals, gold, steels, stainless steel, brass	Finishing	G	B	→ <b>Yellow</b>
	Precious metals, cuprous metals, lacquers, resins	Super-finishing	G	A	→ <b>Orange</b>
ESSENTIEL					
Highly versatile polishing for all metals, offering excellent results, mirror finish. 4 compounds for all !	All metals, plastics	Universal preparation	B	F	→ <b>LKBG</b>
	Stainless steel, precious, cuprous metals, titanium	Fine polishing	F	B	→ <b>MP61S</b>
	Cuprous metals, precious metals	Finishing	G	B	→ <b>AVIVOR</b>
	Precious metals, cuprous metals, steels, plastics	Super-finishing	G	A	→ <b>ORAS</b>
HRLINE					
Animal fat free, high performance, suitable for medical polishing, optimizes the lifetime of cleaning baths.	Stainless steel, titanium, chrome-cobalt, hard metals	Strong preparation	B	F	→ <b>HRS25</b>
		Strong preparation	B	F	→ <b>HRS26</b>
		Medium preparation	B	F	→ <b>HRS27</b>
	All metals	Strong preparation	B	F	→ <b>HRA15</b>
		Medium preparation	B	E	→ <b>HRA17</b>
		Medium, dry preparation	B	F	→ <b>HRA171</b>
		Fine polishing	F	B	→ <b>HRA20</b>
		Super-finishing	G	A	→ <b>HRA30</b>
	Titanium, steels, stainless steel, precious metals				
Highly efficient on ceramic, high hardness metals, platinum, PVD	Ceramic, platinum, hard metals, high-strength steels	Preparation	B	E	→ <b>S10</b>
		Polishing	D	C	→ <b>S20</b>
		Finishing	G	A	→ <b>S30</b>

SEE ALSO!  
Super-finishing cream  
LUXOR® Shine

To help you choose the right compound, refer to the MERARD cut and gloss scales.

